



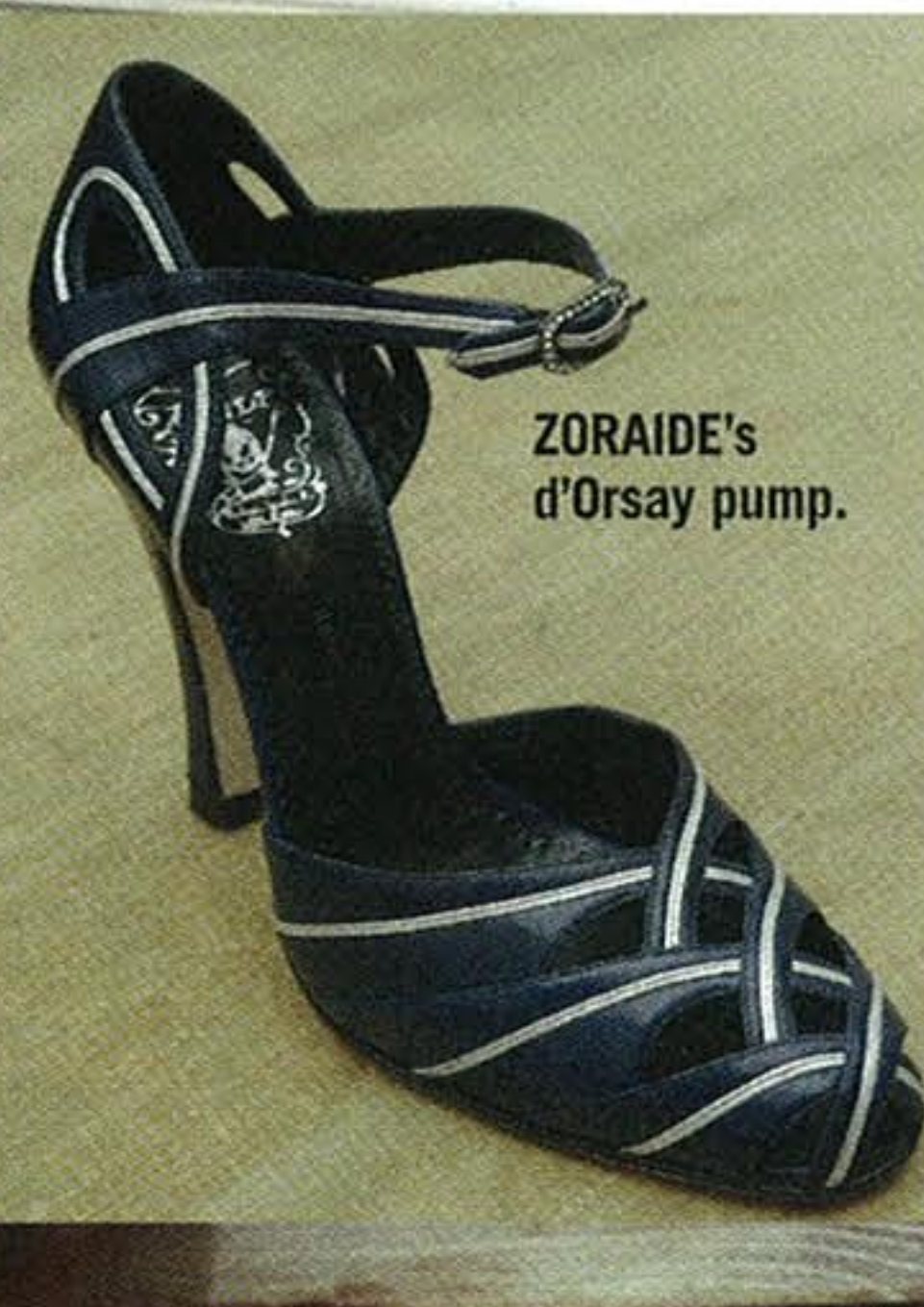
EMPORIO ARMANI's blue suede sandals.



EMILIO PUCCI's slouch ankle booties.



BALDININI's suede sandal with perforated platform.



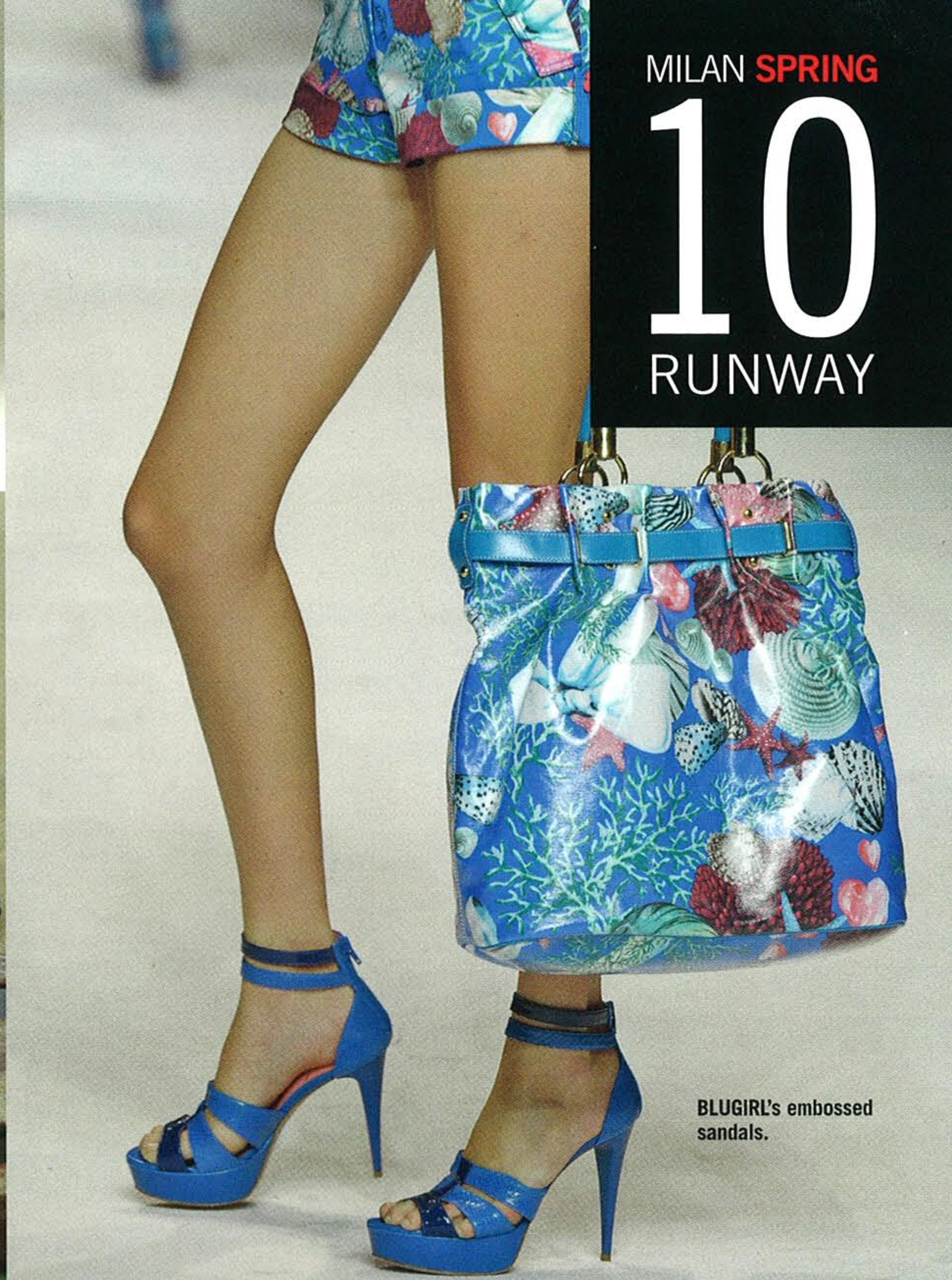
ZORAIDE's d'Orsay pump.



CESARE PACIOTTI's double-platform sandal.



FRATELLI ROSSETTI's iridescent bow-tie shoes.



BLUGIRL's embossed sandals.



MISSONI's kitten-heel sandals with ankle bracelets.



BLUMARINE's ballet flats.



TRUSSARDI's peep-toe white washed bootie.



SERGIO ROSSI FOR PUMA's sneaker-inspired booties.



Blue Notes

Shades of blue colored the catwalks, with periwinkle, sapphire, navy and midnight emboldening spring silhouettes. Royal hues had a rich texture in suede at Emporio Armani, Baldinini and Cesare Paciotti, while soft, pearlized blue looked sweet at Fratelli Rossetti. Meanwhile, Pucci and Zoraide turned to the darker side of the spectrum, but were also clearly playing the blues.